

7/23/20

CLIVE SCHOOL 2020

Stay home if you're sick



I Te Hotoke

Ka hoha te ua the rain is a nuisance
Ka tino pouri nga ra days are gloomy
Ka roa nga po nights are long
He tino makariri it is very cold
He kaha ra te pupuhi o te hau !

there is a lot of wind !

Welcome back all *We have all had a well earned two week break with cool, but great wet weather. It was a great chance to recharge those batteries and reflect on the previous term and to do something a bit different*

Attendance at School

The Board of Trustees encourages all whanau to have their children at school every day possible except when they are ill of course.

For students to gain the numerous benefits of school, attendance is critical. However, the past few years have seen substantial national drops in the number of students going to school regularly*. Additionally since schools have opened post lockdown, initial indications from the weekly attendance data suggest that, after an initial period of higher-than-usual attendance, attendance may be falling even further. (* 'Regular' attendance is defined for statistical purposes as 90% attendance or higher. However, Ministry analysis shows there is no 'safe' level of non-attendance; every day matters. Every day at school has a cumulative impact on students' learning. A child with an average of 90% attendance will miss the equivalent of one year of schooling in ten.)

Term 3

July

20th Term 3 School Opens
 29th Football skills yr 4 5 6

August

3rd Napier Intermediate 'Big Day Out'
 .. BOT meeting 5.30pm Staffroom
 5th Football skills yr 4 5 6
 11th Dance Festival HNI
 12th Football skills yr 4 5 6
 ... Coastal Cluster Soccer
 Havelock North Int Open evening
 18th School Photos
 21st Clive School Teacher Only Day(HNI ToD)
 26th Coastal Cluster Literacy
 31st Napier Int Open Evening

Enrolment Zone.

Clive School does have an enrolment Zone as a means to limit or prevent overcrowding at school.

We have very well defined enrolment zone boundaries. Children who live within the zone have an absolute right to attend this school.

Children from outside who apply for enrolment at Clive School are accepted on the following basis;
accepted for a special programme run at the school,
siblings at school,
past siblings went to school,
children of former students,
children of employees,
and then lastly all other students.

The **Whakatu bus** is operating Our school transport service has returned to normal schedules.

The ongoing safety of the driver and our students and the ability to contact trace is our priority

7/23/20

CLIVE SCHOOL 2020

If your **child is not at school** or on the bus we do need to know, use the School App to send a message or phone the office. 8700538

PERSERVERANCE

Sir Edmund Hilary said ' you don't have to be a fantastic hero to do certain things — to compete. You can be just an ordinary chap, sufficiently motivated to reach challenging goals'... He said' I have moderate abilities, but I do have a good deal of determination, perseverance ... I rather like to succeed'.

i utua i a mo tona hiringa

He was rewarded for his perseverance

The Board of Trustees is certainly busy with a whole raft of property developments on the books, either waiting for Ministry sign off or for those the 'shovels to get digging'.

To be completed between now and the end of 2021...

1. new carved waharoa (under design)
2. internal remodelling and the re development of classrooms 6 9 10 with new toilet block attached
3. new swimming pool fences and flat pool surround surfaces
4. an upgrade of the playing field surface extend cricket run up concrete floor tractor shed additional new drinking fountains
5. hall ..new kitchen/ toilet upgrade and mezzanine floor area revamp
6. replace all school heat pumps
7. a covered walkway (under design)

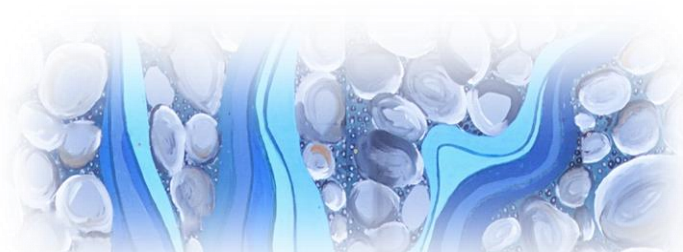
The total is in the vicinity of \$745,000 all of this is being completed as a part of the schools new 5 year Property plan with additional monies to account for a catch up in funding.

MEDICATION

MEDICATION

Please ensure that all medication that is prescribed for children is taken to the office. Children do not self medicate (this includes asthma inhalers) .

Clear instructions need to be completed for the 'medicine' to be administer for Mrs Waitoa and ensure safety of children and staff



Ngaruroro, Tutaekuri and Tukituki all are rivers in our Rohe (in an area).

We all need to look after them.

Next year 2021 for year 7 students

Year 6 students are starting to receive invitations to attend open evenings for various next step intermediates year 7 & 8. We will send as soon as we receive from them their promotional packs home. We do not give other Schools or indeed other People your contact details.

The options are many the children of Clive are spoilt for choice, given the many transport links available. We have children who for a range of reasons enrolled and go to Hastings, Havelock , Heretaunga, Napier, Tamatea, and Taradale, Intermediates plus some go to St Patricks, St Josephs, St Matthews, William Colenso, Twyford, Hereworth, Iona, Woodford, and Lindisfarne,

Having a choice also continues for Clive Kids into their High School options